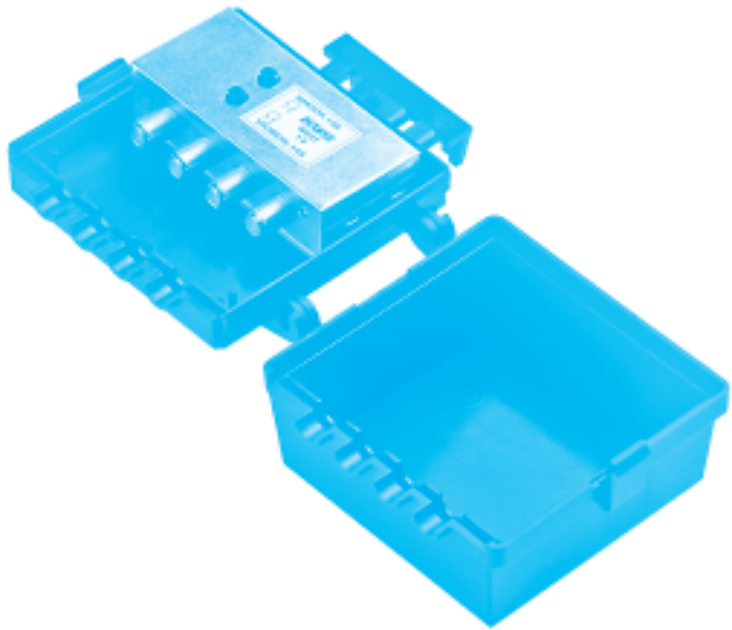


Antenna amplifiers are intended to amplify television signals, losses compensation in drop cables and subscription taps.  
 Amplifiers operate from power supply +12 V with maximal pulsation level 50 mV. Supply feeding is made over the cable.

ANTENNA AMPLIFIERS 'PLANAR'									
'NEAR RECEIVING' ←			'UNIVERSAL'			→ 'REMOTE RECEIVING'			
WIDEBAND	SUBBAND	MULTIBAND	WIDEBAND	SUBBAND	MULTIBAND	SUBBAND	MULTIBAND		
For outdoor ins mounting		NORD-501	NORD-503		WEST 1.0	WEST 1.2	WEST 1.3 WEST 2.0 WEST 3.0	БПМ3 1.1	БПМ3 1.0 БПМ3 2.0 БПМ3 3.0
		F - CONNECTOR		F - CONNECTOR		F - CONNECTOR		F - CONNECTOR	
Extra moisture protection needed		1-69 ZENT FT	21-69 FT	1-5/6-69 ZENT FT 1-12/21-69 ZENT2,0 FT 6-69 ZENT FT	1-69 FT	TV6 FT 6-12 FT FM FT 1-12 FT 1-5 FT 21-69 FT	1-5/6-69 FT 1-12/21-69 FT	21-69 DELTA FT	
		F - CONNECTOR		F - CONNECTOR		F - CONNECTOR		F - CONNECTOR	
					1-69 EF	1-5 EF 6-12 EF 1-12 EF 21-69 EF			
		'CLAMP'		'CLAMP'		'CLAMP'		'CLAMP'	
Designed for installation into pole and antenna--BARS--.		PL0			PL1 PL2			PL3	
		'CLAMP'		'CLAMP'		'CLAMP'		'CLAMP'	

## ANTENNA AMPLIFIER SERIES WEST

- USED IN INDIVIDUAL AND COLLECTIVE TELEVISION RECEPTION SYSTEMS.
- «F»-CONNECTORS.
- DURABLE DUST & SPRAY PROOF PLASTIC CASE WITH MAST FASTENING.
- OUTDOOR APPLICATION FEATURE.
- INNER METALL SCREENING CASE.
- HIGH SELECTIVITY AND INTERFERENCE PROTECTION.
- DIFFERENT MODELS FOR DIFFERENT FREQUENCY RANGES.
- EACH INPUT INDEPENDENT LEVEL AND SLOPE CONTROL.
- HIGH OUTPUT LEVEL.



## SPECIFICATION

Type	WEST-1.0	WEST-1.3
Number of inputs/outputs	1/1	1/1
Frequency range, MHz	48-862	48-230/470-862
Gain, dB, not less	28-32	-0,5/20
Max output level at IMA III (b) -60 dB, dB $\mu$ V, not less		
100MHz	116	-
200MHz	114	-
800MHz	110	105
Noise figure, dB, or less	5	4
Variable gain control, dB	10	-
Variable slope control, dB	15	-
Operating voltage, V	+12 ( $\pm$ 0,3)	
Current consumption, mA, or less	100	50
Dimension, mm	120x120x65	
Weight, kg	0,12	
Type	WEST-2.0	WEST-3.0
Number of inputs/outputs	2/1	3/1
Frequency range, MHz	48-230/470-862	48-100/174-230/470-862
Gain, dB, not less	25/32	27/30/32
Max output level at IMA III (b) -60 dB, dB $\mu$ V, not less		
100MHz	116	116
200MHz	114	114
800MHz	110	110
Noise figure, dB, or less	5	5
Variable gain control, dB	15/10	15/15/10
Variable slope control, dB	10	-
Operating voltage, V	+12( $\pm$ 0,3)	
Current consumption, mA, or less	100	100
Dimension, mm	120x120x65	
Weight, kg	0,16	

